

ASEMP2019 Information Booklet

ASEMP2019 Schedule

The University of Queensland, November 25-27

Time	November 25	November 26	November 27
8.30-9.00	Light breakfast	Light breakfast	Light breakfast
9.00-10.45	Panel: Women and Power (3 x 35 mins) Berges, Forbes, Melamedoff	Panel: State and Separation of Powers (3 x 35 mins) Klein, Field, Anstey	Panel: Metaphysics, Religion & the New Science (3 x 35 mins) Lahteenmaki, Lee, Gordon
10.45-11.05	Morning Tea	Morning Tea	Morning Tea
11.05-12.15	Keynote address: (Marguerite Deslauriers)	Keynote address: (Margaret Schabas)	Split Session (3 x 35 mins) Propach, Stetter, Reuter
12.15-1.15	Lunch	Lunch	Lunch
1.15-2.00	Concurrent Sessions (3 x 45 mins) Sipowicz, Nicolls, Lingier	Concurrent Sessions (3 x 45 mins) Thrasher, LeBuffe, Sachdev	Concurrent Sessions (3 x 45 mins) Storni, Kim, Dimench
2.00-2.05	Short break	Short break	Short break
2.05-2.50	Concurrent Sessions (2 x 45 mins) Zetlin, Boespflug,	Concurrent Sessions (2 x 45 mins) Carvalho, Matsuda	Concurrent Sessions (2 x 45 mins) Lenczewska, Zellmer
2.50-3.15	Afternoon Tea	Afternoon Tea	Afternoon Tea
3.15-4.00	Concurrent Sessions (2 x 45 mins) Yrjonsuuri, Amijee	Concurrent Sessions (2 x 45 mins) Paukkonen, Corbin	Concurrent Sessions (2 x 45 mins) Edamura, Gartenberg
4.00-4.05	Short break	Short break	Short break

4.05-5.30	Keynote address (Lisa Shapiro)	Keynote address: (John Carriero & Calvin Normore)	Concurrent Sessions (2 x 45 mins : 4.05-5.35) Currie, Parker
5.30-7.00	Reception/ Students' Digital Exhibition	Drinks at Woolloongabba (at own expense)	
7.00-9.00	City Cat ride to Southbank restaurants (own expense)	Conference Dinner Bengal Kitchen (cost included)	

***UQ Group Learning Room (271/273) and the Atrium in Global Change Institute**

Stradbroke Island, Nov 28-Dec 1 (at own expense)

Nov: 28 Depart from UQ around 9am.

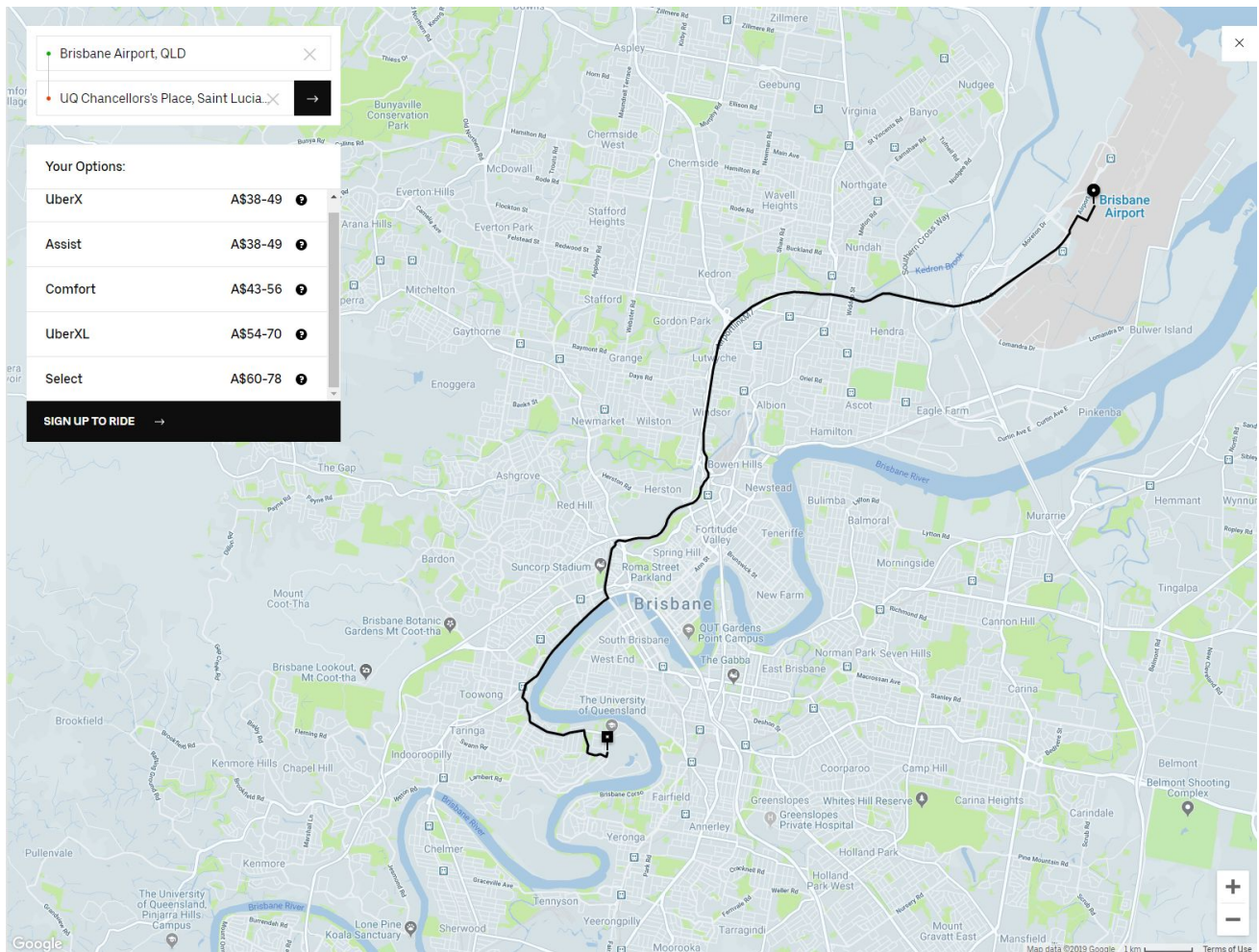
10.55 Water taxi to Island.

Sun, surf, eat, drink, philosophy.

Dec 1: Depart

Transport to UQ from Brisbane Airport

- Uber



- Taxi
- Public Transport (Train and Bus)
Start: Brisbane Airport
BVDL Train (Airport Line - Varsity Lakes Line) to Park Road Station
Any bus from **Park Road** to **UQ Lakes**
End: UQ

Accommodation

November 24th - 27th (4 nights)

The Women's College, University of Queensland

Phone: (07) 3377 4500

Address: College Rd, St Lucia QLD 4067

- 15 rooms in a corridor with communal bathroom
 - **\$80** per night
- One Room connected to shared bathroom = **\$90** per night
- Room with ensuite = **\$100** per night
- Self-contained apartments (4)
 - One person = **\$120** per night
 - Two people = **\$155** per night

* Price includes breakfast

AirBnB

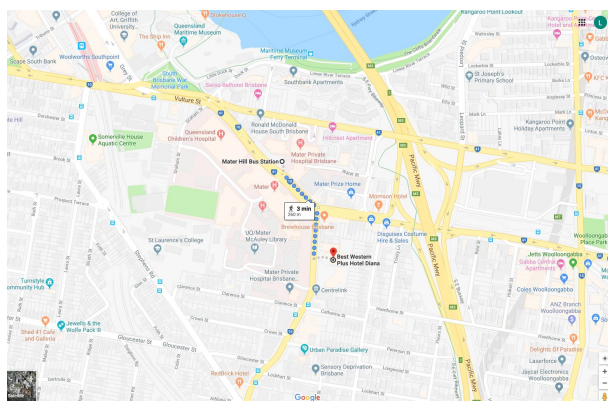
Suggested suburbs (Within 10km of UQ)

- St Lucia (UQ suburb) - walking distance
- West End
Bus 192 to UQ Lakes
- Highgate Hill
Bus 192 to UQ Lakes
- Woolloongabba
Bus 66 to UQ Lakes
Majority of buses at Park Road Stop travel to UQ Lakes
- Toowong
Bus 402, 411, 412 to UQ Chancellors Place
- Indooroopilly
Bus 427, 428, 432 to UQ Chancellors Place

Nearby Hotels

Woolloongabba

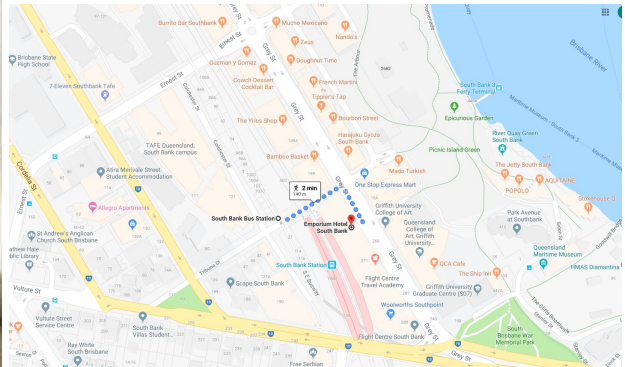
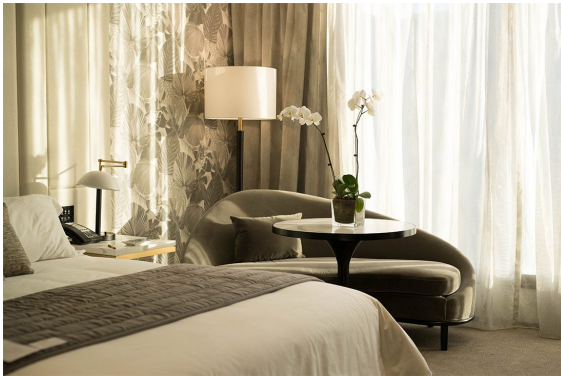
- Best Western Plus: Hotel Diana
Address: 12 Annerley Rd, Woolloongabba QLD 4102
Phone: (07) 3391 2911



~\$137 per night (1-2 guests)
3 minute walk to Mater Hill Bus Station
Bus 66 to UQ Lakes

Southbank

- Emporium Hotel (Vista Suite)



~\$289 per night
 Bus 66 to UQ Lakes

Brisbane City

Treasury Heritage Hotel

Address: 130 William St, Brisbane City QLD 4000

Phone: (07) 3306 8888



Hotel Deluxe King



Hotel Deluxe Twin



Casino Deluxe king



Casino Twin

~\$294.67 per night

Bus 66 to UQ Lakes

Bus 411, 412 to UQ Chancellor's Place

Catering (included)

Monday 25th

- Light Breakfast (pastries/tea/ coffee)
- Lunch
- Afternoon Tea
- Reception (5:30pm - 7pm)

(Dinner at own expense at Southbank)

Tuesday 26th

- Light Breakfast (pastries/tea/ coffee)
- Lunch
- Afternoon Tea

(Conference Dinner -- free for participants)

Wednesday 27th

- Light Breakfast (pastries/tea/ coffee)
- Lunch
- Afternoon Tea

(Dinner at own expense or Departure)

Conference Dinner (included)

Thursday, November 26th (7pm - 9pm)

Bengal Kitchen

641 Stanley St

Woolloongabba

(From UQ: Take Bus 66 from UQ Lakes bus stop to Mater Hill Busway Stop; turn left, cross at Annerley Rd and walk back along Stanley St to 641).

Mentoring Service

Graduate students or early career researchers who are interested in working with a senior researcher/ mentor during the conference to receive advice on their paper or career progression strategies may contact the conference organisers.

Please contact Ms Laura Pham at <laura.pham@uq.edu.au> with the subject title 'ASEMP Mentoring Program' to participate in the mentoring program.

Stradbroke Island Trip

Stradbroke Island Transport

1. **SHCL Train to Cleveland Train Station**
2. Stradbroke Flyer Water Taxi free **shuttle bus** to **Water Taxi** (leaves Cleveland Train Station 10 minutes before water taxi departs)

departing Toondah Harbour	departing One Mile Jetty
CLEVELAND	DUNWICH
# 4:55 am	# 5:25 am
# 5:55 am	6:25 am
6:55 am	7:25 am
7:55 am	8:25 am
8:55 am	9:25 am
9:55 am	10:25 am
10:55 am	11:25 am
11:55 am	12:25 pm
12:55 pm	1:25 pm
1:55 pm	2:25 pm
3:25 pm	3:55 pm
4:25 pm	4:55 pm
5:25 pm	5:55 pm
6:25 pm	6:55 pm
# 7:25 pm	# 7:55 pm

- no connecting bus

green - not available Saturday, Sunday & public holidays

3. **Water Taxi to One Mile Jetty** (Dunwich)
4. **North Stradbroke Island Bus to Point Lookout** (last stop)

7 Days - Departing Junner Street, Dunwich				
Pt Lookout to Dunwich	Dunwich to Pt Lookout	Amity to Dunwich	Dunwich to Amity	Pt Lookout to Amity
6.50am	7.25am	6.50am Weekdays	-	-
7.50am	8.25am	7.50am	-	-
8.50am	9.25am	9.25am (PL)	9.25am	8.50am (D)
9.50am	10.25am	10.25am (PL)	10.25am	9.50am (D)
10.50am	11.25am	-	-	-
11.50am	12.25pm	-	-	-
12.50pm	1.25pm	1.25pm (PL)	1.25pm	12.50pm (D)
1.50pm	2.25pm	-	-	-
3.20pm	3.55pm	3.55pm (PL)	3.55pm	3.20pm (D)
4.20pm	4.55pm	4.55pm (PL)	4.55pm	-
5.20pm	5.55pm	-	-	-
6.20pm	6.55pm	-	-	-

Stradbroke Island Accommodation (Point Lookout) (at own expense)

Whalewatch: www.whalewatchresort.com.au

If you are happy to share an apartment with other attendees, please let us know. (If 3 people share a 3 bedroom apartment, the total price per person can be around \$300AUD per person for 3 nights.)

Most units are made up of 2 queen beds and 2 single beds over 3 bedrooms. Master with ensuite and other rooms share a large bathroom/toilet.

Prices:

Garden National Park side units are large and spacious and some even have ocean glimpses

1 x 1 bedroom Garden National Park side unit x 3 nights = \$645.30

1 x 2 bedroom Garden National Park side unit x 3 nights = \$739.80

1 x 3 bedroom Garden National Park side unit x 3 nights = \$834.30

Ocean Side Units are modern spacious units with ocean views from their balconies, most are 2nd level walk up, some have lift access

1 x 1 bedroom Ocean Side unit x 3 nights = \$726.30

1 x 2 bedroom Ocean Side unit x 3 nights = \$820.80

1 x 3 bedroom Ocean Side unit x 3 nights = \$915.30

Ocean Front Ground Floor units open out onto our grassed area, are private and have ocean views, these units are often perfect for large groups to gather and enjoy the outdoors together

1 x 1 bedroom Ocean Front Ground Floor unit x 3 nights = \$807.30

1 x 2 bedroom Ocean Front Ground Floor unit x 3 nights = \$901.80

1 x 3 bedroom Ocean Front Ground Floor unit x 3 nights = \$996.30

Premium Ocean View units have spectacular views out to Main Beach and down toward the Gold Coast, these units are large and spacious with a bath in the ensuite

1 x 1 bedroom Premium Ocean View unit x 3 nights = \$861.30

1 x 2 bedroom Premium Ocean View unit x 3 nights = \$955.80

1 x 3 bedroom Premium Ocean View unit x 3 nights = \$1050.30

Ray White Real Estate: <https://www.visitstradbroke.com.au/>